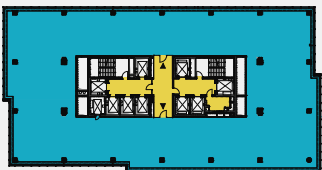




SCALE
1:250



NIVY
TOWER

Non-residential (business) premises
in exclusive use of the Lessee

1104,90 sqm

Non-residential premises in shared use
with other Lessees on the floor and building

87,80 sqm

Total leased area

1192,70 sqm

DRAFT

TENANT

NIVY TOWER | 10th ABOVE GROUND FLOOR

* Measurements and floorplans are prepared on actual technical documentation and could be changed by Landlord without prior notice.

